

**Inventory list : BAVARIA 46CN**

Year of construction: 2014  
Length o.a.: 14,27 m, Beam: 4,35 m, Draught: 2,10 m, Displacement: 12,60 t,  
Mast height: 20.75 m  
4 cabins, 8 + 1 berth, 3x WC + shower

**SAILS:**

Furling Genoa – 51 m<sup>2</sup>  
Furling mainsail – 56 m<sup>2</sup>  
Spinnaker pool  
Spinnaker (on request) -  
160,00 m<sup>2</sup>  
2 Winch handles

**ENGINE:**

Volvo D2 55 - 41 kW  
Fuel – 210 l  
Consumption – ca. 7 l/Std.  
Diesel can - leer  
Fuel funnel  
Spare engine belt  
Spare impeller  
Spare engine oil  
Start battery

**ELECTRICITY:**

2 main switches  
3 consumption batteries  
E-switches / Fuses  
Battery charger 220 V  
Shore supply cable  
Spare fuses  
Sockets 12 / 220 V

**NAVIGATION:**

2 Steering wheels  
**Twin rudders**  
GPS with plotter  
Navigation's charts  
NAV-set  
Pilot book  
Hand bearing compass  
VHF  
Speed/log Garmin  
Echo sounder Garmin  
Autopilot Garmin  
Wind-vane

Wind instrument Garmin  
Search light  
Binoculars  
Barometer, Hygrometer,  
Thermometer

**ACCOMODATION:**

Fresh water tanks 360 l  
Water heater  
Fresh water pump  
Water hose  
Water canister  
**Webasto - Heating**  
Gas stove with oven  
2 Gas tank  
Refrigerator 12 V  
Refrigerator box 12 V  
Sink  
Dishes for 9 persons  
Cleaning and washing set  
Bucket, bowl, brush  
Litter bag, toilet paper  
**CD/DVD with radio**  
**LCD television**  
**Mobile phone (networked)**  
Blankets, pillows  
Linen  
Bimini-Top  
Spray hood  
Cockpit table  
Railing net (on request)  
Dinghy, paddles, pump  
Outboard engine

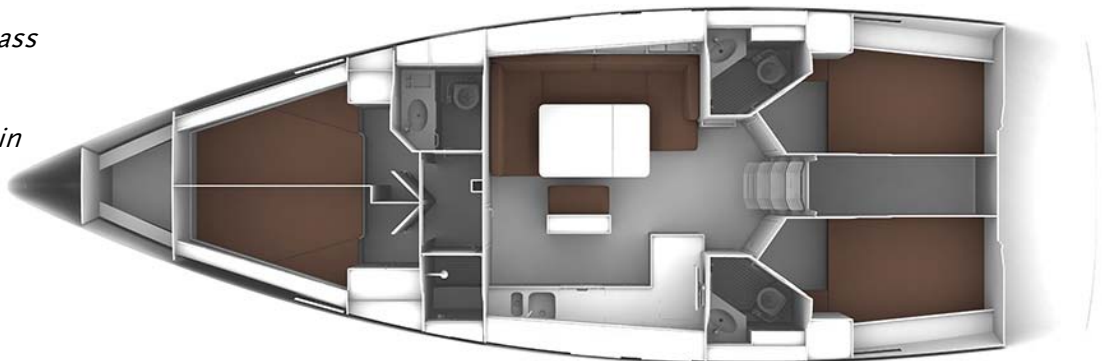
Teak Cockpit  
Boarding ladder  
Folding stern platform  
Cockpit shower

**SAFETY:**

**Life raft 10 persons**  
Life ring  
Lifejackets  
Life belts  
Hand bilge pump  
el. Bilge pump  
Emergency signals  
Torch  
Fog horn  
First aid kit  
Fire extinguisher  
Tools and spare parts  
Spare tiller  
Flashing buoy  
Mast chair

**MOORING:**

el. Anchor windlass  
Bower anchor + 50 m  
chain  
stern anchor  
5 mooring rope  
6+1 Fenders  
Boat hook  
Gangway board  
**Bow thruster**



Base: English, German, Italian language, 24 hours attendance, SMS contact, mobile phone contact, service powerboat, e-mail PC application (WLAN), transfer (extra), provision supply (on request), storage box rental  
Marina Hramina: Reception, rooms (hotel), restaurant, bar, toilets, laundry, market, parking under video watch, petrol station, beach...  
Murter: Piazza, supermarket, small shops, bank, ambulance, petrol station, car workshop, restaurants, bars and taverns...